



# BRENTHAM NEWS ISSUE 153 FEBRUARY 2005

(Distributed to residents and friends of Brentham)

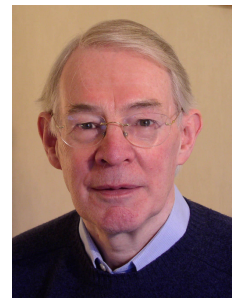
*This version of Brentham News has been adapted for the Brentham website.  
Private telephone numbers and addresses and commercial ads have been deleted.*

## Brentham Society Chair's Notes

This is my first set of notes for Brentham News, and I am very conscious that in following Sue Elliot in the Chair I have a difficult task to live up to her example. I should take this opportunity to express publicly the thanks of the Committee for the inspiration and hard work that Sue has put in over the past three years. I am delighted that she will still be running the Brentham Heritage Society (the charitable wing of the Brentham Society devoted to educational aspects) and that we shall still be working closely together.

It seems appropriate I should set out briefly my own interests and the main issues facing the Society in the next year. Although new to the Brentham Committee, I have lived on the estate for 32 years and have also served a term on the Ealing Planning Committee. My concerns are therefore very much in the preservation and conservation of the area in terms of its architecture and appearance, as well as issues of the general environment such as street lighting, parking and traffic.

The principles which affect a conservation area such as ours, to which an "Article 4 direction" applies, are still not always appreciated by planners and members of the Council's Planning Committee. Many residents are also not sure what this means in terms of what may or may not be done to make changes to properties within the estate. We and the Conservation Panel (which is independent of the Society) are working closely with the Council's Conservation Officers to bring the Brentham Design Guide up to date, and to advise residents how it affects them. I hope it will be possible to issue a revised guide this year.



The other major issue in 2005 will be the plan to renovate and extend the Brentham Club. Your Committee has made it clear to the Club Regeneration Board, which is controlling this project, that whilst we are sympathetic to their broad objectives, we will be looking very closely at the detail to ensure that the interests of residents, particularly in the conservation and preservation of the character of the area, are properly safeguarded. There is a report elsewhere in this edition of the stage that has been reached.

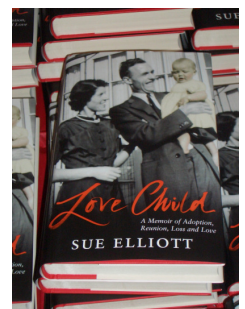
The Society is not only about planning and conservation. I hope its other activities, as outlined in the Calendar of Events accompanying this *News*, will continue to be supported by residents. We are nothing without you, the members - so let's be hearing from you!

**Tony Miller**

## Congratulations all round



To long-standing Brentham resident Ramsay Hughes (left) who turned 95 on 17th January. Until recently Ramsay used to host regular drop-in coffee mornings at her home in Winscombe Crescent. The milky coffee and lively conversation were legendary. Ramsay now lives in a nursing home in central Ealing, but the tradition lives on, thanks to Dial-A-Ride and Brentham friends who arrange for Ramsay to visit one of their homes.



To Sue Elliott, Chair of the Brentham Heritage Society, whose book *Love Child* (right), "a memoir of adoption and reunion, loss and love", has just been published in parallel with a two-part ITV series on adoption. Copies are available from the Pitshanger Bookshop.

To carol singers who turned out in force on two nights last Christmas, and were perhaps the best group of singers to tour Brentham in recent years. A total of £247.50 was collected for the Childhood Eye Cancer Trust (formerly The Retinoblastoma Society). Thanks to everyone for their support, whether singing, contributing money or providing refreshments.

And finally, to all winners of 2004 garden awards, as announced at the Brentham AGM 2004, and especially to the residents of 115 Fowlers Walk, who won the rose bowl.

## Planning and conservation: more questions and answers, by popular demand

*Is my builder right to say I don't need planning permission to install replacement Brentham-style windows?*

No, you *do* need planning permission, even if you are intending to install copies of your original windows. There is good reason for this. There are tradespeople who claim to make the windows correctly, but when installed they prove to be different from the originals in such respects such as using beading instead of putty, incorrectly-formed mouldings, and incorrect dimensions. The result is an inexact copy of the original and the unity of the terrace is compromised. The Planning Department will ask you to apply for retrospective planning permission and may require you to reinstate the original features. It is much easier and cheaper to get it right before work starts by obtaining approval for the work. Incidentally there are several different types of windows on Brentham houses. Even the cottage-style properties that look the same at first glance have small differences in design from terrace to terrace.

*My windows let in draughts. Should I replace them or get them restored?*

The advice from English Heritage and other conservation bodies is to consider replacement only as a last resort. One reason is that the original timber is of a quality not available now. Whenever possible windows should be restored and draught-proofed, and secondary double-glazing fitted if required. We are interested to hear from residents who have undertaken such work and to add the names of reliable companies to our list. The Society for the Protection of Ancient Buildings (SPAB) and The Institute of Historic Building Conservation (IHBC) both have useful websites; [www.spab.org.uk](http://www.spab.org.uk) and [www.ihbc.org.uk](http://www.ihbc.org.uk). SPAB produces a range of inexpensive leaflets on aspects of building repair.



*The drive in front of my garage needs to be resurfaced. Do I need planning permission?*

Yes, you do. The application will need to detail the area to be covered and the materials to be used.

*I have planning permission for an extension and my builder says it does not matter if what he builds differs a little from the plans. Is he correct?*

No, he is not. The building should be in accordance with the plans as approved. If for some reason during the course of construction a problem is found that makes it difficult for the plan to be followed exactly, then you should consult with the Planning Department at Ealing Council to discuss a way forward. If you allow your builder to build differently from the plan as approved the Council may take action and require you to put the work right, which is costly and a nuisance.

*If you feel uncertain about these or any other planning issues, contact Pat Baxendale, Heather Moore, or the Planning Department at Ealing Council, 22-24 Uxbridge Road, W5 2HL (8825 6600). The Planning reception is open weekdays 8.30am-5pm, and you should mention that you live in a conservation area with Article 4 direction.*

Heather Moore

## From Knowledge Comes Care

The guest speaker at this year's AGM of the Brentham Society was John Scott of the Bedford Park Society. After outlining the history of Bedford Park, "the first garden suburb", he explained the rationale for the development of logbooks by the Bedford Park Society. A folder has been produced for each of the 350 listed houses on the estate, to act as a data-base for owners, architects and planners and a framework for recording change.

Each logbook contains information on an individual house, as well as general guidance on the application of planning regulations to listed buildings, technical notes on specific aspects of conservation, and historical notes on Bedford Park and its architects. Owners update their logbooks by adding their own information about maintenance work they undertake, thus compiling a useful record both for themselves and for their successors in the premises. Bedford Park logbooks have apparently become such prized items that homeowners yearn to keep them as souvenirs when they move away!

This logbooks scheme is clearly an excellent idea. Would anyone like to work up a similar project for Brentham?

## Brentham Club Regeneration News

The Regeneration Board has been busy developing the business plan and talking to banks about financing a development scheme. However, even informal consultation with residents cannot begin in earnest until funding is approved, a special general meeting of Club members has amended the Club's constitution, and the next stage of architectural plans have been worked up. These tasks should be completed in the coming weeks, after which draft plans will be presented at a series of Open Days. Meanwhile a specialist transport consultant has looked at traffic and access issues, producing a report that has also gone to Ealing Council, and other preparatory work and discussions with Council staff have continued.

You will have received a questionnaire on Club services before Christmas. *If you haven't yet returned this, it isn't too late. Your views are important, so please post it back asap.* Meanwhile, if you have queries or concerns, please contact Sue Elliott, the Brentham contact on the Regeneration Board.

### Brentham Society & Brentham Heritage Society committee (Chair Tony Miller on page 1)



### News from the Brentham Heritage Society

Top of the Heritage Society's priorities for the coming year is Wendy Sender's Photo Survey of the whole estate, which she has almost completed and expects to be ready for the Brentham Archive and the website within weeks. Ealing's Conservation Officers have expressed great interest in the Survey and want a copy for their own Intranet for reference purposes. As promised, photos of individual houses should also be available to purchase in due course.

The time is fast approaching to consider a reprint of 'the Brentham book' - and what form this should take: straight reprint, new revised edition, or a paperback version? If you have views, let us know.

We're also considering commissioning a professionally produced DVD of Brentham life. Nothing too salacious, but a record of community life on the estate now for posterity, and for individuals to buy.

We'd love to extend the range of Brentham heritage merchandise to include postcards of archive photos and plans, but *we need someone to take this on as a project. If you have experience or contacts in the print or graphics business, let's hear from you.*

The Victoria & Albert Museum is mounting a major Arts & Crafts exhibition this year and we hope to arrange a special visit. *Watch this space for details.*

**Sue Elliott**

Aileen Reid, author of the Brentham book, is the curator of Emery Walker's house at 7 Hammersmith Terrace, which will be open this year to coincide with the V&A exhibition. The house offers a fine example of an Arts and Crafts interior. Walker, a typographer, printer and close friend of William Morris, was closely associated with many of the key bodies that propagated the ideals of the Arts and Crafts movement. Visits to the house must be booked in advance by phoning 020 7251 9125. Further information is available on the web at [www.emerywalker.org.uk](http://www.emerywalker.org.uk)

### **Brentham Society Membership, 2005**

An envelope for your subscription is enclosed.

**Please return this to your membership collector  
asap**

You need to complete the section that asks for details of your name and address so the collector can get a membership card to you).

**The annual subscription is still only £2.**

**Donations** are greatly appreciated and always put to good use. Either include it in your subscription envelope, or pay a donation direct into the Society's account

Thank you for your continued support

### Local history lectures

Ealing Central Library has been hosting a series of talks on local history on Mondays at 7 pm. Forthcoming ones will be on Perivale (14 February), Victorian and Edwardian Ealing (21 February), and using the new Dictionary of National Biography (28 February). Entry is £4 per talk, including refreshments. For further details, phone 8825 5600.

A small original Brentham mantelpiece and fire surround is available. If interested, contact Pat Baxendale.

### **Brentham gardeners meet again**

Evening group starts up again on Tuesday 5<sup>th</sup> April, meeting at 7.30 pm at 18 North View.

Afternoon group reassembles at 2 pm on Wednesday 20 April, at 28 Holyoake Walk.

New members are always very welcome, with or without gardening expertise.

Further details: Maureen McCarthy

### **Brentham residents' notices**

#### **Sally Kelly's Annual Charity Plant Sale**

This year for the Motor Neurone Disease Association

**Sunday March 20<sup>th</sup>, 1-4 pm**

2 Ruskin Gardens

#### **Victoria Ayling's new yoga class**

Male and female, all ages and levels welcome.

**St. Barnabas, Thursdays 7.30 - 9 pm**

☎ 8810 7521

